



PEGBOARD TILE KIT

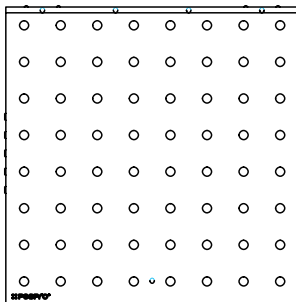
Patent Pending

BEFORE STARTING, READ THE INSTRUCTIONS IN FULL OR
SCAN THE QR CODE BELOW TO WATCH THE VIDEO.



www.pegpro.com/tile-instructions

Package contents:



PegPro Tile (x16)

Note: A hammer will be needed for installation.



Top Nail Guide with Leveler (x1)
This is for installing four nails on the top edge of each tile.



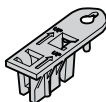
Bottom Nail Guide (x1)
This is for installing one nail at the bottom center of each tile.



Nail (x85)
Five nails per tile to hold the Tiles securely to the wall.



Driver (x2)
This is used to drive the nail to the proper depth.



Black Connector (x30)
This is to be used to connect Tiles.



White Connector (x15)
This will be snapped ONLY along the inside edge of your final top-row Tiles.



Tack (x2)
This is for temporarily holding the bottom row of tiles to the wall during the nailing process.

ASSEMBLY INSTRUCTIONS

STEP 1

Unboxing

Remove all contents from the box and separate the Connectors into Black and White. Set the White Connectors off to the side for now. Verify you have all the components shown above.

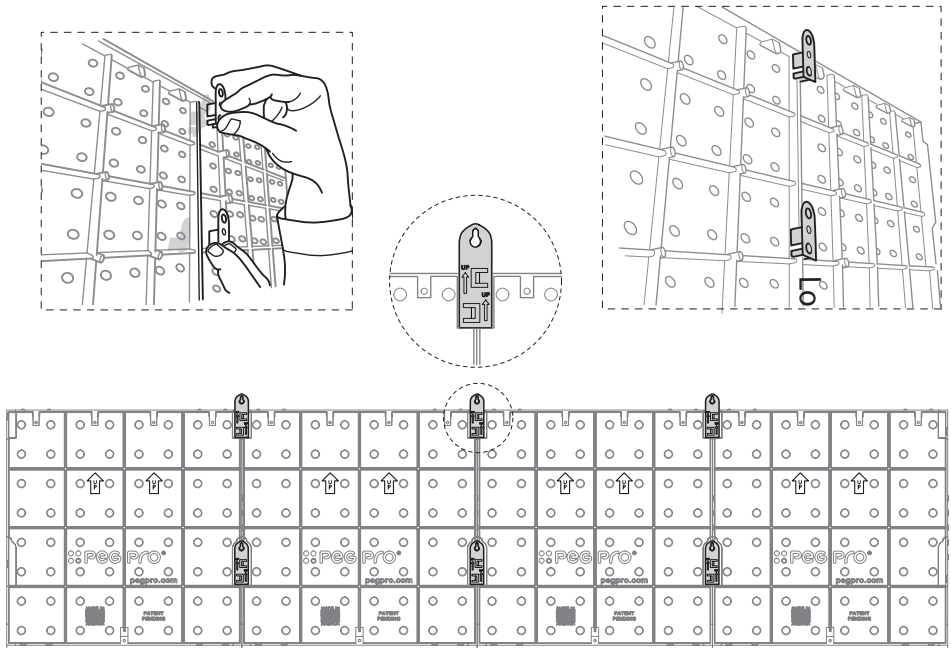
Assembling the Tiles

Note: Determine the layout of your board before assembling your bottom row of Tiles.

1) Begin laying out your bottom row **FIRST** by arranging the Tiles **FACE DOWN** and pushing them together.

2) Once your bottom row is laid out, use the Black Connectors to snap the edges of the Tiles together.

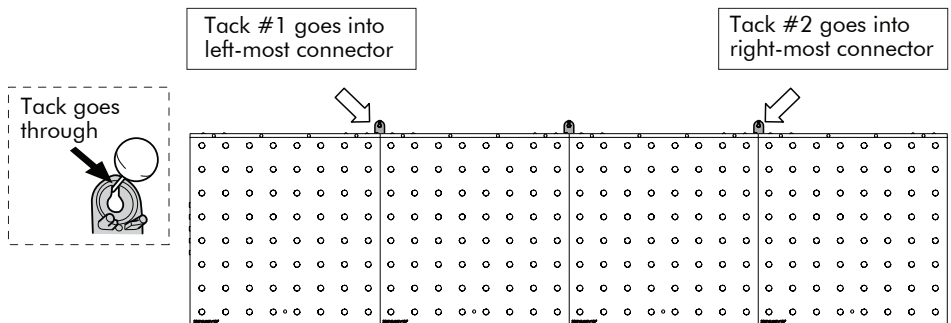
STEP 2



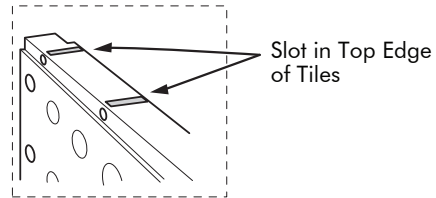
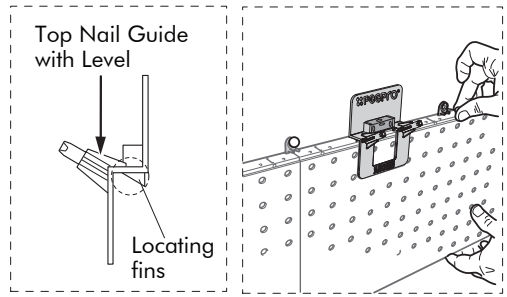
Hanging the Bottom Row of Tiles

- 1) Now that your bottom row is snapped together flip your assembled row of tiles **FACE UP** so that the holes of the Black Connectors show on top.
- 2) Make a dot on your wall where you want the slot of the left-most connector located.
- 3) With the row of tiles **FACE UP** against the wall, take Tack #1, line up the slot of the far-left connector with the dot you made on the wall, and push the Tack firmly through the connector's slot and into the wall. The row of tiles will be hanging at an angle for now.

STEP 3

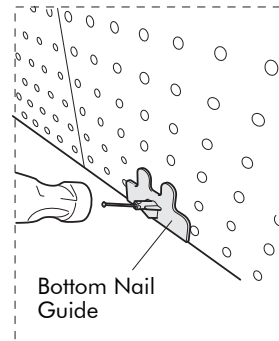
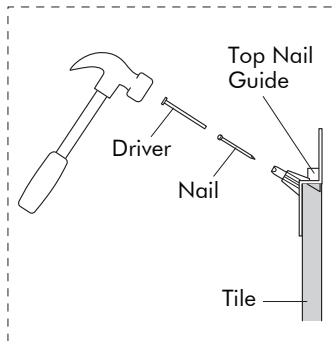


- 4) Grab Tack #2 and the Top Nail Guide with Leveler. Place the Top Nail Guide in the middle of the top edge of the row. Locating fins on the Top Nail Guide fit into slots on the top edge of the tiles. (see pictures)
- 5) Lift the right side of the row until it's level (the bubble in the level is between the two black lines).
- 6) Once level, push the tack through the right-most connector's slot and into the wall.
- 7) Verify the row of tiles is level. If not, adjust one of the tacks up or down as needed to make it level.



Securing the Tiles To the Wall

- 1) Place the Top Nail Guide with Leveler in the left two slots of the left-most Tile.
- 2) Insert a nail into each of the two tubes of the Top Nail Guide, followed by a Driver.
- 3) Using a hammer, tap the Driver's head until it is fully seated against the Nail Guide Tube. Your nail is now installed to the perfect depth. Repeat with the second Driver.
- 4) Repeat 2 and 3, moving the Top Nail Guide along the top edge of the row of Tiles until there is a nail in each hole. (**Note:** There are 4 nail holes at the top of each Tile.)
- 5) Once all the top nails are installed, remove the Top Nail Guide and set it aside.
- 6) Now grab the Bottom Nail Guide, a nail, a Driver, and a hammer.
- 7) Place the Bottom Nail Guide at the bottom center of the Tile, as shown below.
- 8) Insert the nail and Driver into the tube of the Bottom Nail Guide, and using a hammer, tap the Driver's head until fully seated.
- 9) Repeat these steps, moving along the bottom center of the row until there is a nail in each hole.
- 10) This only applies to the bottom row of tiles: Remove the tacks and set them aside. Tacks will not be needed to install any other rows of Tiles.



STEP 5

Adding Additional Rows

Note: Each additional row must be assembled, hung, and secured **ONE** row at a time!

1) Build additional rows of tiles using the instructions from STEP 2.

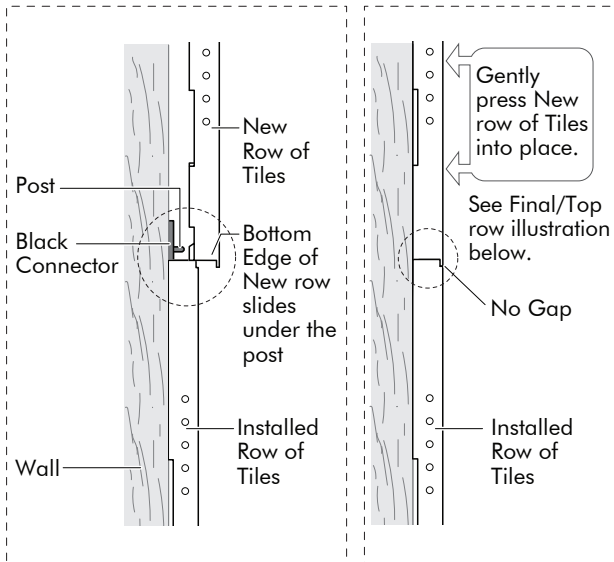
IMPORTANT: When assembling your final/top row, use the White Connectors at the top edge of the Tiles instead of the Black Connectors. This will give your product a finished look.

2) Line up the bottom edge of your new tile row with the top edge of the already-hung row. The Connectors have small posts that the bottom edge of the new row will fit under (see the image to the right for reference).

3) Gently press the new row of tiles toward the wall to snap the rows together.

Note: Once the rows are snapped together, the new row should stay put. This means you're ready to secure it permanently with nails.

4) Secure additional rows of tiles using the instructions from STEP 4.



Final/Top Row

